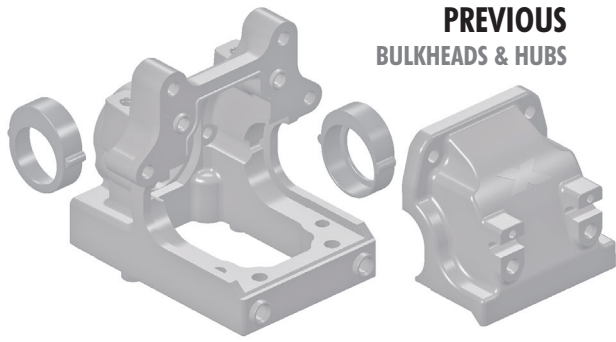
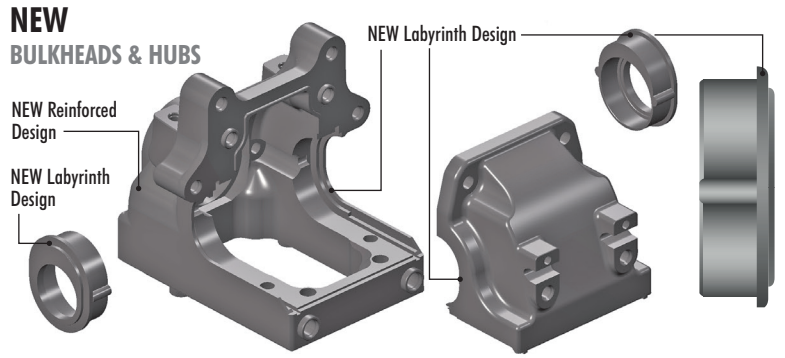


# XRAY XB8 SUPPLEMENTARY SHEET

This Upgrade Kit includes reinforced Front & Rear Diff Bulkheads and Diff Height Inserts featuring new Labyrinth Dust Covers. Please follow these supplemental instructions during related assembly steps.



**PREVIOUS  
BULKHEADS & HUBS**



**NEW  
BULKHEADS & HUBS**

## BALL-BEARING HUB POSITIONS

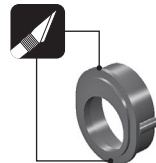
LOWER

CENTER

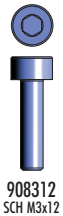
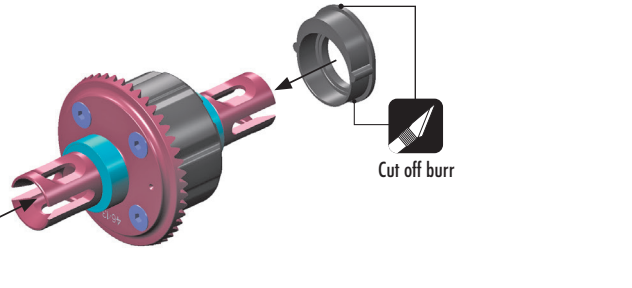
UPPER



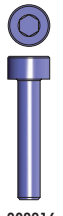
Cut off burr



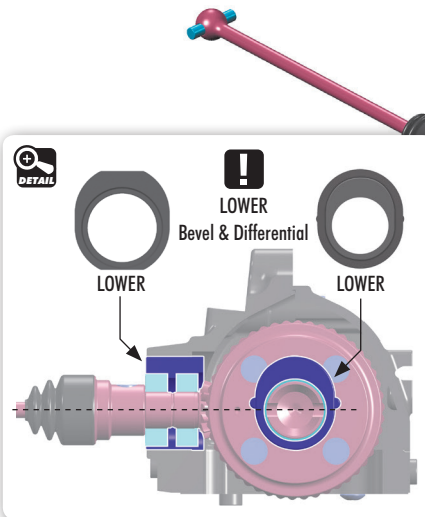
Cut off burr



908312  
SCH M3x12



908316  
SCH M3x16



DETAIL

LOWER  
Bevel & Differential

LOWER

LOWER

**!** During assembly, there may be some differential movement in the bulkhead. In particular, **DO NOT** check mesh or diff movement without installing suspension holders and securing bulkhead to the chassis. All parts have specifically designed tolerances, and only when the car is fully assembled will it have the proper amount of play where necessary. Check for free movement of all rotational driveline components once the driveline and suspension are completely assembled, as well as non-binding operation of the suspension components.

4  
TIGHTEN  
3x16mm SCREWS SECOND

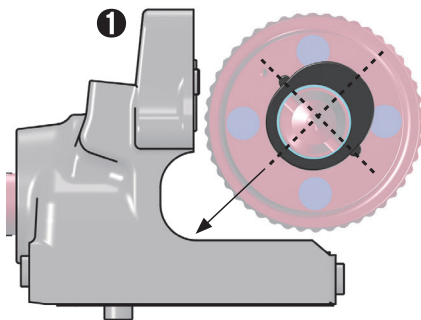
HUB  
GR

2

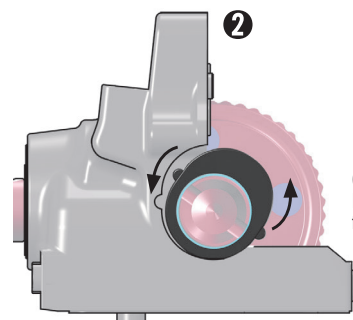
FRONT

3  
TIGHTEN  
3x12mm SCREWS FIRST

## INSTALLING THE DIFFERENTIAL WHILE FIRST TIME BUILDING THE CAR

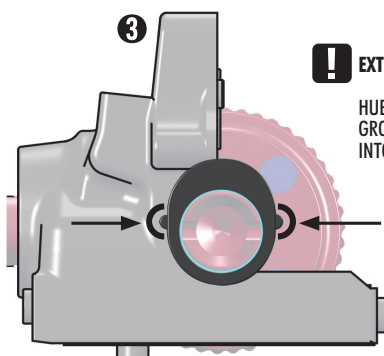


1



2

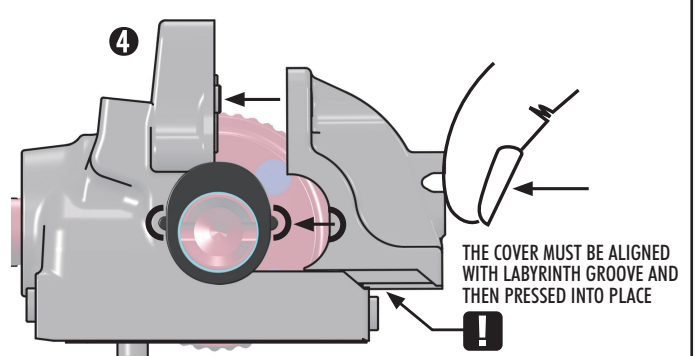
Check that left and right Diff Height Inserts are installed in the same orientation.



3

**!** EXTREMELY IMPORTANT

HUB MUST BE INSERTED IN GROOVE AND PROPERLY PRESSED INTO BULKHEAD.



4

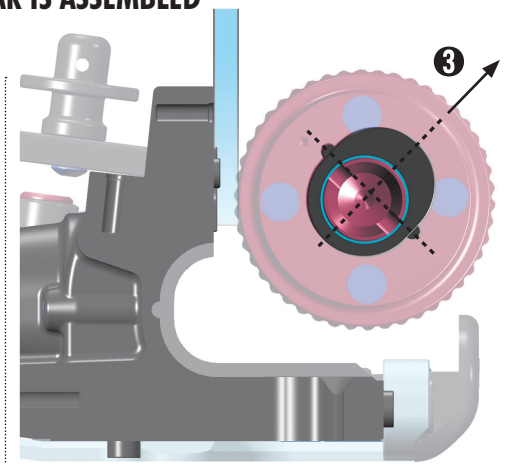
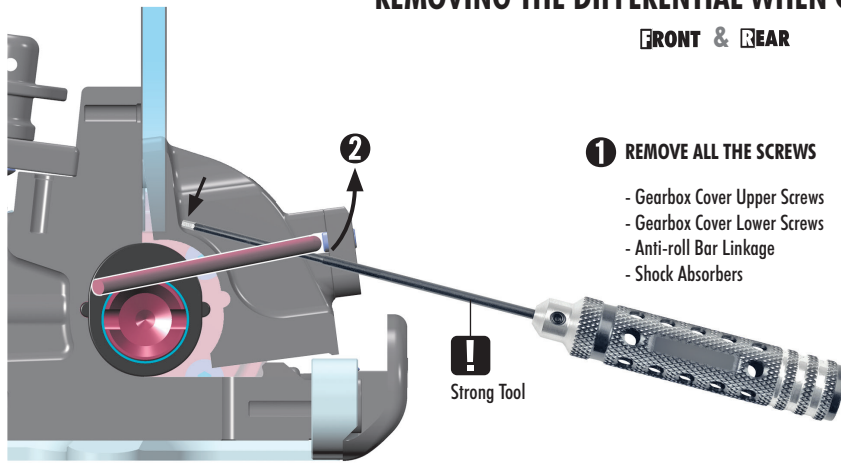
THE COVER MUST BE ALIGNED WITH LABYRINTH GROOVE AND THEN PRESSED INTO PLACE

## REMOVING THE DIFFERENTIAL WHEN CAR IS ASSEMBLED

FRONT & REAR

### 1 REMOVE ALL THE SCREWS

- Gearbox Cover Upper Screws
- Gearbox Cover Lower Screws
- Anti-roll Bar Linkage
- Shock Absorbers



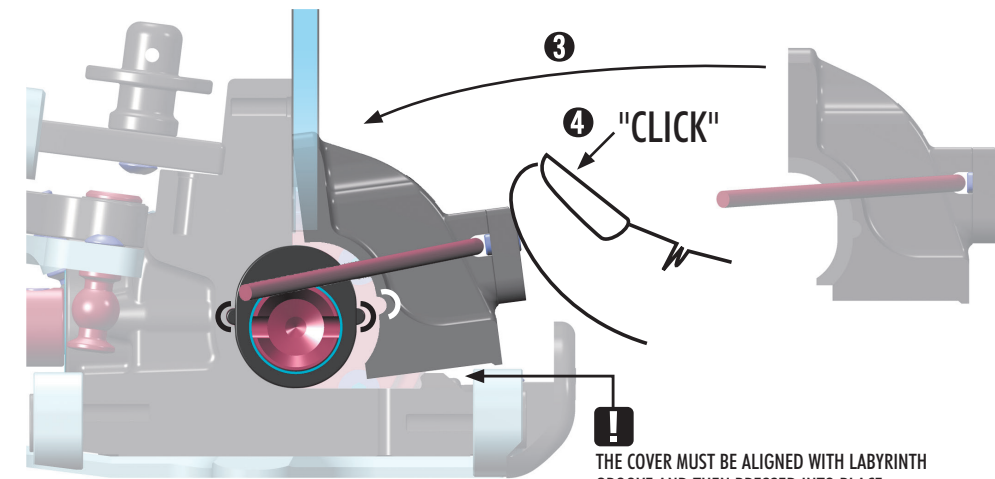
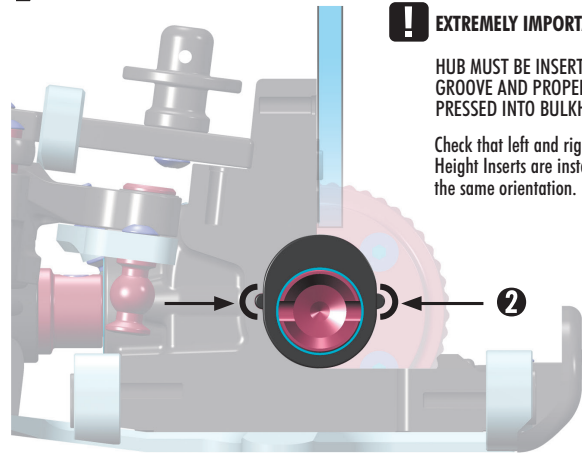
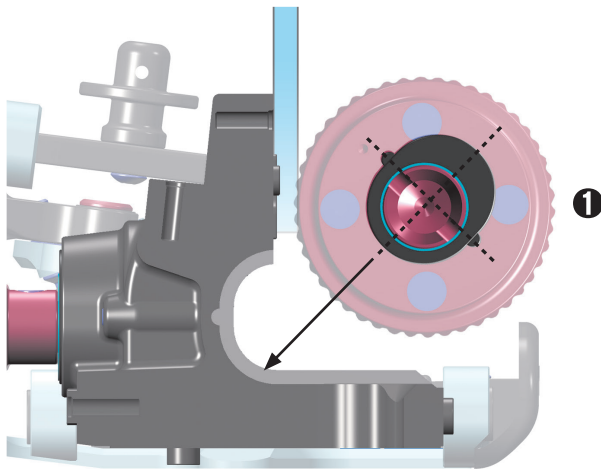
## INSTALLING THE DIFFERENTIAL WHEN CAR IS ASSEMBLED

FRONT & REAR

### ! EXTREMELY IMPORTANT

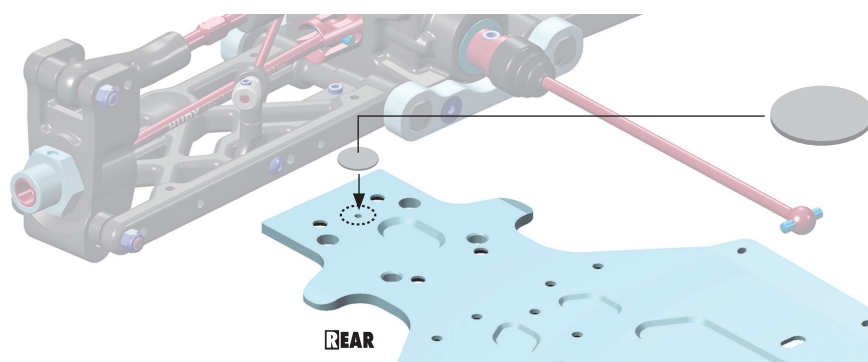
HUB MUST BE INSERTED IN GROOVE AND PROPERLY PRESSED INTO BULKHEAD.

Check that left and right Diff Height Inserts are installed in the same orientation.



### 5 TIGHTEN ALL THE SCREWS

- Gearbox Cover Upper Screws
- Gearbox Cover Lower Screws
- Anti-roll Bar Linkage
- Shock Absorbers



**TIP** To prevent dust apply one of the included stickers on the rear part of the chassis to cover the center balancing hole.

In case you use more droop than 104-105mm then by certain set-up configurations of the car the front upper arm may hit the servo saver. This has no influence on the handling of the car however you may want to modify the bottom of the front upper arm to avoid it hitting the servo saver.



More DROOP lower than 104-105mm